



GALWAY CHAPTER NEWS

October 2011

Christmas is on the Way

Hi all,

Thanks to all for attending our September meeting in Oranmore. The meeting was very well attended, and there was good interaction, as we discussed what we want to achieve over the next few months.

We are looking at the possibility of having a "display" of some of our pieces in some location before Christmas, so our challenges over the next few months will be to turn pieces that would be suitable for this.

We are looking to organise a visit to a woodturner or have a demonstration locally over the next year,

Thanks to Noel Small and Kevin Walsh for what was described as " a

competently delivered and wonderful workshop" hard to believe that they got all this together at such short notice
Thanks to Noels wife Yvonne for provided an over generous array of home baking –

Thanks to Amby for the comprehensive report from the workshop.

See you all in the Maldron in Oranmore on Thursday night at 8 PM as we need to decide what we will do for our Christmas party this year.

Tim

Inside this issue:

Introduction	1
Schedule and results	2
Workshop	4,5
News Bits	5

CONTACT INFORMATION

Chairman:	Sean Clancy
Hon. Secretary:	Tim Lydon
Hon. Treasurer:	Kevin Walsh
Newsletter Editor	Tim Lydon
Librarian	Tim Lydon

www.galwaywoodturners.com

Ordinary membership	€54
Family membership	€57
Student membership	€10
Associate membership	€10

Chapter Proposed Events 2010

Date	Host	Location
0th January	George Anderson	Renmore - M Lodge
03 February	Meeting	Maldron Hotel
24th February	Roger Greally	Loughrea - G Anderson
03rd March	Meeting	Maldron Hotel
24st March	Sean Clancy	Moycullen— K Walsh
07th April	NO Meeting	Collaborative Preparation
23th April	John Mc Gann	Ardrahan — Colin Becker
04th May	Meeting	Maldron Hotel
26Th May	Martin Lodge	Corofin — T Lydon
01st September	Meeting	Maldron Hotel
15th September	Noel Small/ Kevin Walsh	Corrandulla— Ambrose O H
06th October	Meeting	Maldron Hotel
20th October	Colin Becker	Salthill—S Clancy
03rd November	Meeting	Maldron Hotel
24th November	John Mc Gann	Ardrahan - Kevin Walsh

October Challenge

“ Turn a Piece suitable for a “Display”

SEPTEMBER CHALLENGE



September Challenge Results

- 1st Piece No 9: Kevin Wassh
- 2nd Piece No.3: Tim Lydon
- 3rd Piece No 1: AmbroseO Halloran

Noel Small / Kevin Walsh Workshop Corrandulla

Noel Small's Workshop Thursday 15th September

The ten of us that arrived to Noels were immediately greet the very warn snug oil fire. This was Noel's first workshop as a demonstrator which was a two hander with another first time workshop demonstrator Kevin Walsh.



Noel Small and Kevin Walsh

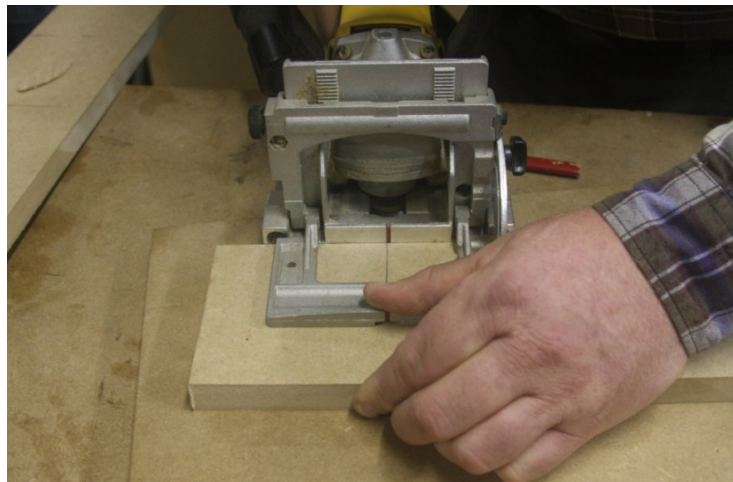
Noel Small's Demonstration

Noel kicked off the night's proceedings by giving a master class on modern joining methods vs. the traditional mortise and tenon joint.

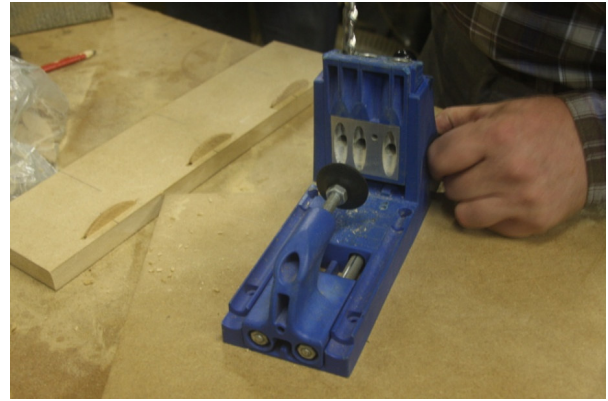
Noel started with a biscuit Joiner using No.10 biscuits. He demonstrated both horizontal and vertical jointing methods.

Noel was working with MDF but had the machine connected to the Festool with automatic electronic start stop switch.

Noel used No.10 biscuits and went through step by step how to mark up the wood and set the fence depth so that the joined board would line up when glued.



Noel then went to explain dowelled joint using the Kreg-Jig system. The system has a special purpose drill bit which is aligned in a very sturdy jig to allow angled holes to be drill into the boards being jointed.



The final jointing method was the Festool Domino Joinery System .

Noel explained that the system consists of the Domino joiner and pre-fabricated beech and sipo Domino tenons.

The important difference between this system and the biscuit jointer is in the cutting action of the machine. The cutter both rotates and oscillates to produce a clean mortise slot. A unique feature is that the width of the slot can be varied. By changing a lever the width adjustment is simple and fast. This means you have a loose tenon for internal joints on the boards which make matching up grain etc much easier. The result joint is much stronger than a biscuit joint. Noel demonstrated both horizontal and vertical jointing with this tool. At the end of the demonstration we had an array of methods to consider as an alternative to the traditional mortise and tenon joints.





Kevin Walsh's Demonstration

Kevin came with a bag of surprises all meticulously worked out in advance. The attention to detail; in the preparation included having plastic covers on the pre-sharpened tools so they would not be blunted during transport. He first produced a drawing of the shape of a classical vase that he was about to make. This was a brave move for a first demonstration, because had he made a mistake in the shape of drawing he would have had to make the same mistake in the turning so it would match.

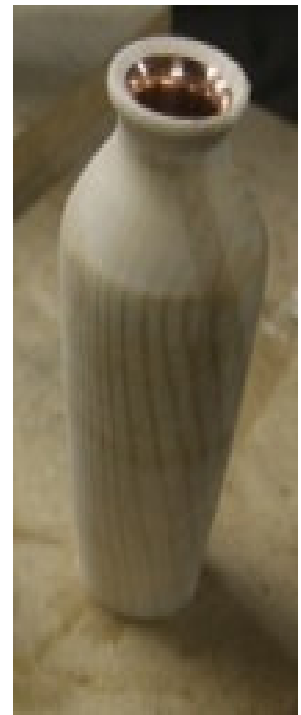
Reaching into the bag he brought out range of callipers all coloured coded with tape. Each calliper was set to the critical dimension of the vase.

Next out of the bag was a length of $1\frac{1}{8}$ " or 28mm copper pipe to make the insert for the vase. Then he produced a $1\frac{1}{8}$ " fostner bit to drill a hole for the insert.

Kevin drilled and turned the vase shape competently and then sanded.

He then produced a finished insert from the bag and described in detail how it was put together.

Using a ball pane hammer he formed the basic neck shape. As he worked the copper he kept heating it with a blow torch to counteract work hardening.



When he had the basic shape the base was fitted using pre-fluxed solder. The gas soldered joint gave a water tight base to the insert. The copper was then sanded down with 600 grit . The insert was then burnished with a domestic metal polish. A coat of metal lacquer was applied to prevent tarnishing.



Even with all this attention to detail the next of the insert had to be formed to fit the shape of the neck of the vase snugly. Kevin went to his magic bag and produced a pre-turned former. This was used to flare the neck of the insert as it was inserted into the vase.

Had the demonstration ended here it would have been complete but Kevin was not finished with his magic bag and this time he produced a range of attractive dispensing bottles all containing pre-mixed water soluble dyes. The dyes Kevin uses are made by W.D. LOCKWOOD & CO., INC. (49 WALKER ST. 1ST FLOOR NYC, NY, 10013 USA) . Kevin had a range of dyes which were premixed in hot water. To help apply the dye he went to magic bag and produced a pre-turned jam chuck.



The first step with all water based dyes is to raise the grain by applying a mist spray of water to the piece. Allow to dry and then sand down the raised grain. Kevin then explained that he wanted to achieve a graduate colour tone going from a dark colour at the base and getting lighter towards the rim of the vase.

He first applied a mixture of dark green and Oxford oak to the lower quarter of the vase and using a hair dryer as a heat gun completely dried the dye .



Then he applied dark forest green dye to the rest of the vase and again dried with the hairdryer. Kevin said he want to highlight the grain of the ash. One advantages of using a dye is that it does allow the grain to come through. One way to highlight the grain is to apply liming wax. In order to ensure that the wax penetrated deep into the grain Kevin first brush the piece with a soft nylon scrubbing brush. The liming wax was then rubbed on and allowed to dry.



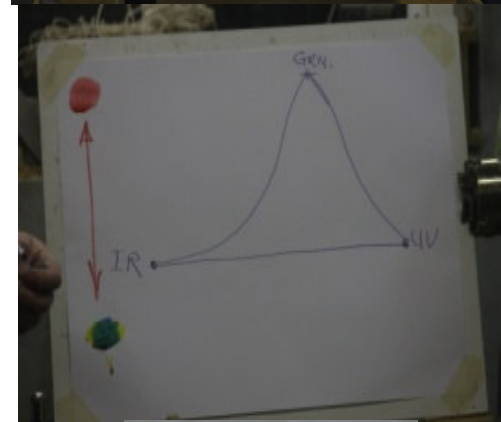
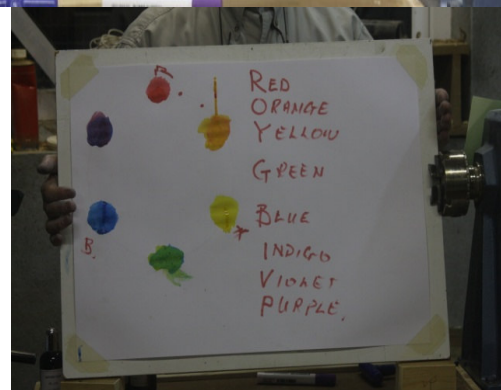
While the liming wax was drying Kevin went to his magic bag again and produced two sheets of drawing paper and a paint brush.

With all the calmness and competence from his years of teaching Kevin proceeded to give a practical demonstration of the colours in the visible spectrum.

He first applied the primary colours and then showed how secondary colours can be formed from mixing the primary colours. He showed why some colours are complimentary. He said the human eye is most sensitive to Green/Blue part of the visible spectrum.

Kevin then wiped off the excess liming wax. Danish oil was then applied and the copper insert was put into vase with a dab of silicone to hold it in place and to make sure there was a water tight fit between the copper and the wood.

By then end of this demonstration Kevin had not only produced a colour graduated limed vase but had given a masterclass in thoughtful preparation and flawless execution to produce a really unique vase. .



In between Noel's demonstration and Kevin's Noels wife Yvonne provided an over generous array of home baking – the apricot slices with cream being a popular favourite. As always on a workshop night any report can not possibly capture the fun and banter and friendship between like minded individuals come together to simply share a common interest.

It was really gratifying to see both Noel and Kevin competently deliver such a wonderful workshop with confidence. It was really a great night our sincere thanks to Noel, Kevin and Yvonne

Ambrose O'Halloran