



GALWAY CHAPTER NEWS

Issue 62

November 2007

Brilliant workshop by Frank and Des

We enjoyed a great night of excellent turning in Menloe in mid October. I arrived a little bit late to find Frank Welsh putting the final cut on a lovely lamp. The classic design was perfectly executed. Des completed the evening with two complex pieces. I remember seeing Eli make a small eccentrically turned lady pen in Ardrahan. Des explained the steps clearly and

handed out worksheets. The project becomes more achievable now. Des also turned himself an original wooden leg. More about that later! I always learn a lot by- looking at others turn. The benefits of planning a project, drawing accurate scaled plans (before approaching the lathe), the right way to hold a skew, how to make clean cuts and more! GA

Inside this issue:

Workshops	1
Events Guide Challenge results	2
Des O'Halloran & Frank Welsh WORKSHOP	3
Make a Pepper Mill	4,5
News Bits	6

CONTACT INFORMATION

Chairman: John McGann 091-635354
 Hon. Secretary: Ambrose O'Halloran 091-798225
 Hon. Treasurer: Brid O'Halloran 091-798225

Committee members

Roger Greally, Martin Lodge George Anderson

www.galwaywoodturners.com

Membership fees were due January 1st

Ordinary membership	€48
Family membership	€52
Student membership	€10
Associate membership	€10

Chapter Workshops 2007 / 2008

Host	Location	Date
September 20th	Sean Clancy	Moycullen
October 18th	Des O'Halloran/ Frank Walsh	Menlo
November 15th	George Anderson	Renmore
December TBA	Christmas Party	TBA
January 17th	John McGann	Ardrahan
February 23rd	Glenn Lucas	Carlow
March 20th	Tim Lydon	Kilannin
April 17th	Brid & Ambrose O'Halloran	Cregboy
May 15th	Columba Eagleton	Ballyglunin
June 1st	Mark Sfiiri	Ardrahan

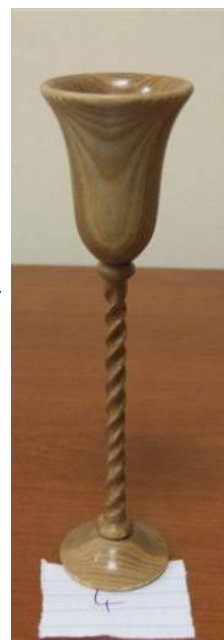
CHALLENGE RESULTS OCT 2007



1st Place
Ambrose
O'Halloran



2nd Place
Claire Gurley



3rd Place
John Mc Gann

Workshop Monlo with Des and Frank



On Thursday the 18th we assembled in Des O'Halloran's workshop in Menlo. This was to be a two hander by two old sea dogs who had long since swallowed the anchor. Frank Welsh and Des are some of the longest serving members of the Chapter and yet incredibly this was their very first workshop together.

Frank first got interested in turning while he was at sea and bought his first wood turning book in Hong Kong. Frank kicked off with a piece of 15" x 5" x 10" piece of beech. He quickly started to shape the Grecian Urn type lamp. He showed that he had learned a few tricks along the way, such as the square section bradawl for inserting the bras nipple to hold the light holder. He discussed his standard finish for lamps of sanding sealer and lacquer. He showed us how to drill for the cord using a V-Block. It was a very informative session and for legal reason I won't go into the wooden leg jokes coming from

the Moycullen contingent.

Frank showed us that his skills did not end there. The two apples pies that Frank had baked were quickly consumed at tea break. Thanks Frank, it is hard to believe that this was your very first workshop demonstration for the Chapter. We certainly hope that there will be many, many more to come.

After tea the other young Galway Chapter member, Des, started by turning a lady figurine. This off centre piece involved making a ball shape which was then inserted into Mick O'Donnell jaws of an Axminster chuck. The ball allows to pieces to be moved to different centres easily. The head and the base were the only parts turned on the true centre. With his usual dexterity and his one liners, Des produced the off centre figurine very quickly using the skew. Des, as usual, had a detailed drawing to give everybody.

Des then mounted a piece of pitch pine and started turning his off centre leg. This again involved a detailed drawing as the off sets must be carefully worked out. This is really an interesting piece. If it were to be done using the Escoulen chuck, it could really produce a stunning piece of off centre spindle work.

This was really another great nights turning which sadly less than half the Chapter attended. These are special nights that people who miss out on them miss the opportunity to see real skill and innovation in a warm friendly environment. If these demonstrations were presented in a more formal setting they would lose their intimacy and fun and joy of a group of people simply enjoying each others company and admiring each others skills

Thanks Frank and Des for a great night.

Ambrose O'Halloran

Turning a Peppermill

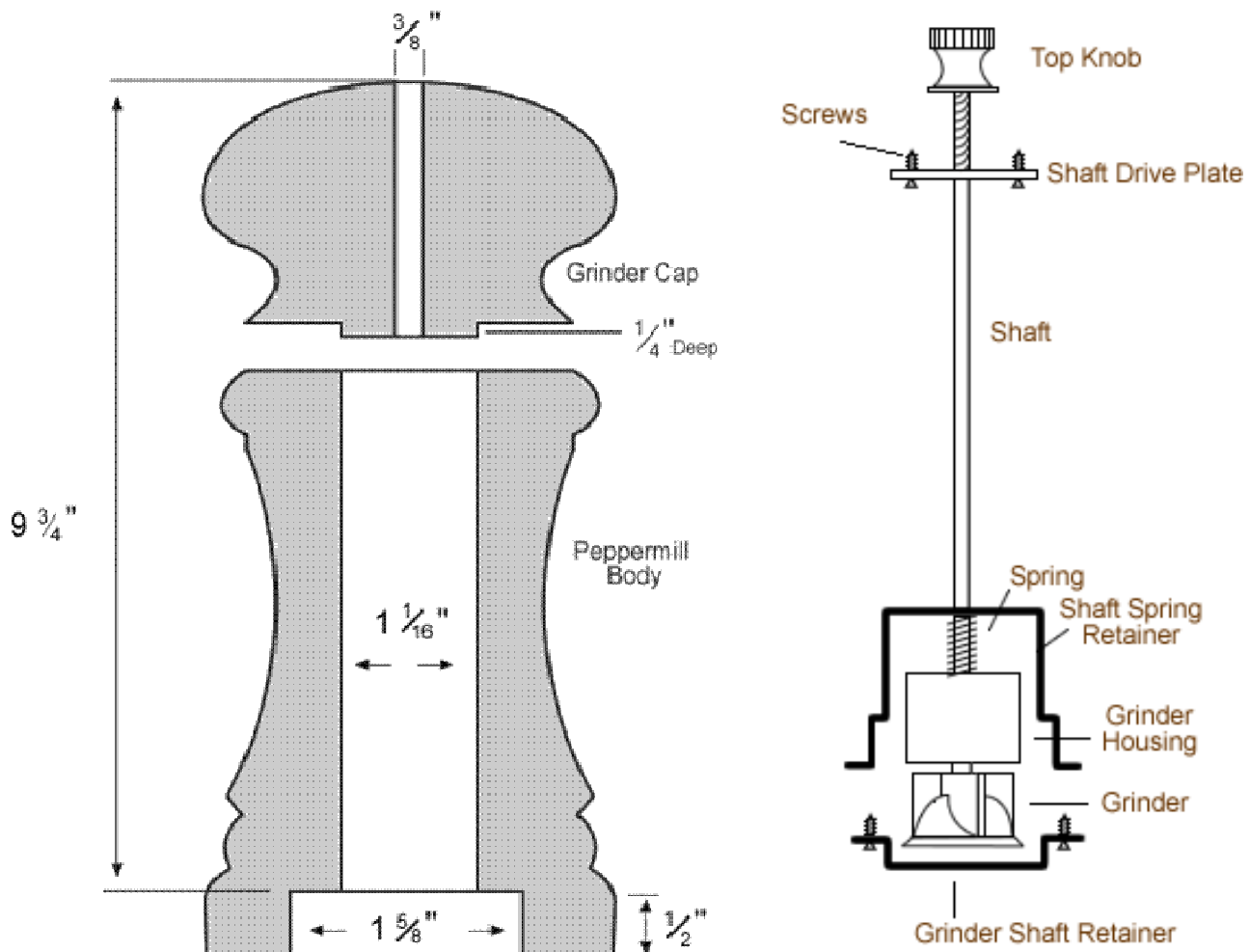
Plan your Turning

Draw out the design of your peppermill. Determine how tall the Peppermill Body will be, and how tall the Peppermill Top will be.

Turn the Body

Select a square blank that is $1/2$ " longer than the Peppermill Body and $1/4$ " wider than the diameter of your Peppermill Body. Mount the blank on your lathe and rough turn to a cylinder. Remove the blank from the lathe and drill the $1\ 5/8$ " hole $1/2$ " deep in the bottom of the peppermill. Without moving the peppermill from your drill press drill the $1\ 1/16$ " hole half-way through the body. Flip the peppermill over and continue drilling the $1\ 1/16$ " hole from the other side until both holes meet.

10" Peppermill Plan



Turn the Top

Select a square blank that is $\frac{3}{4}$ " longer than the Peppermill Top and $\frac{1}{4}$ " wider than the diameter of your Peppermill Top. Mount your blank on the lathe and rough turn to cylinder. Turn a tenon on the bottom that is $\frac{1}{4}$ " long and just shy of $1 \frac{1}{16}$ " in diameter. To size it properly, it should fit snugly in the $1 \frac{1}{16}$ " hole in the Peppermill Body. Also turn a tenon on the top of the Peppermill Top that is 1" in diameter. Remove the Peppermill Top from the lathe and drill the $\frac{3}{8}$ " hole through the center.

Finish the Peppermill

Press fit the Peppermill Top into the Peppermill Body and remount the whole peppermill on the lathe using jam chucks or a 3 or 4 jaw chuck. Turn the peppermill to final shape and sand. The 1" tenon should still be on the top of the Peppermill Top. Remove the Peppermill Body from the Top. Turn the $1 \frac{1}{16}$ " tenon down slightly so that it still fits snugly into the $1 \frac{1}{16}$ " hole in the Peppermill Body but is not sloppy. It shouldn't be smaller than 1" in diameter. The Peppermill Body should be able to rotate freely on the tenon. Remove the Peppermill Top from the lathe and remount so that you can finish the top of it. Finish turning and final sand. Remove the top from the lathe and apply your finish to the peppermill.

Installing the mechanism

(see diagram below for reference)

Slide the Grinder, Grinder Housing, Spring, and Shaft Spring Retainer over the Shaft. Slide this up through the bottom of the body of the peppermill so that the flanges of the Shaft Spring Retainer catch the lip of the $1 \frac{1}{16}$ " hole. The Grinder should be fitting inside the Grinder Housing and the Grinder Housing should fit snugly in the $1 \frac{1}{16}$ " hole.

Mark with an awl the location of the screw holes in the bottom of the Shaft Spring Retainer. Slide the retainer out of the way and drill the holes for the screws. Line up the holes of the Shaft Spring Retainer and the Grinder Shaft Retainer with the screw holes and use 2 screws to secure the grinder body.

Next, prepare the Peppermill Top by centering the Shaft Drive Plate over $\frac{1}{4}$ " tenon and the $\frac{3}{8}$ " hole. Mark the screw holes, drill the holes, and screw the Shaft Drive Plate onto the bottom of the Peppermill Top.

Slide the Peppermill Top over the Shaft. The $\frac{1}{4}$ " deep tenon should fit into the $1 \frac{1}{16}$ " hole. It shouldn't fit so tightly that the Peppermill Top can't be turned, but it also should fit so loose that the Peppermill Top can wobble. Screw the Top Knob onto the shaft. You should be able to tighten and loosen the Top Knob to adjust the spring tension on the Grinder. That regulates the size of the pepper grinds.

Filling and Use

Unscrew the Top Knob and remove the Peppermill Top from the shaft. Fill the pepper chamber $\frac{3}{4}$ full of peppercorns and then reassemble. When dispensing pepper, always turn the Peppermill Top to the right (clockwise).

**GALWAY CHAPTER
NEWSLETTER
IRISH WOODTURNERS' GUILD**



WWW.GALWAYWOODTURNERS.COM

Contact
Hon. Secretary
Ambrose O'Halloran
Aisling
Cregboy
Claregalway
Co. Galway
Ireland
Phone: 091-798225 Mobile 086 803
3323
E-mail: cregboy@hotmail.com

Monthly Turning Challenge Items 2007

<i>January</i>	<i>2007</i>	<i>Kitchen Item</i>
<i>February</i>	<i>2007</i>	<i>Bowl</i>
<i>March</i>	<i>2007</i>	<i>Wall Hanging</i>
<i>April</i>	<i>2007</i>	<i>Bowl</i>
<i>May</i>	<i>2007</i>	<i>Box</i>
<i>June</i>	<i>2007</i>	<i>Piece from two different woods</i>
<i>September</i>	<i>2007</i>	<i>Spinning top</i>
<i>October</i>	<i>2007</i>	<i>Goblet</i>
<i>November</i>	<i>2007</i>	<i>From LOG</i>

*For this years Challenge the best of your 8 entries
will be considered. It's never too late to bring in a
piece for this year's Challenge.*

NEWS BITS

Nov Meeting
Thursday 1st Nov
8.00 P.M
Quality Hotel Oranmore
Don't Miss it

The challenge piece is
to make
Something from a log

Please notify me of any
Items you wish to sell.
A free Advertisement
Will be placed here
For one month
(or longer if requested)